

National Polar Data Center
National Centre for Polar and Ocean Research



User Guidelines v1.1
for
National Polar Data Center (NPDC)

Contact Us:

Polar Data Services Section (PDSS)

Tel: 0091-832-2525515

e-mail: npdc@ncpor.res.in / vssamy@ncpor.res.in

Table of Content

1. Introduction.....	4
1.1 Home Page of the NPDC portal.....	5
1.2 How to Sign-In for a new user.....	5
1.3 Type of users.....	6
1.3.1 General User	6
1.3.2 Registered User.....	6
1.4 User Registration	6
2. Search/Browse metadata.....	7
2.1 Free Text Search	7
2.2 Browse by Scientific Keywords.....	7
2.3 Browse by Location.....	8
2.4 Observation Datasets Search	9
2.5 Scientific Voyage Details.....	9
2.6 Sagar Kanya Cruise Report	10
3. Metadata Details	10
4. How to submit metadata	11
4.1 Upload Dataset for the corresponding submitted metadata.....	11
4.2 Metadata saved Successfully	12
4.3 Metadata Dashboard.....	12
Document Revision History.....	13

Table of Figures

Figure 1:Overall functionality of NPDC	4
Figure 2: Flow of metadata submission by user at NPDC Portal	4
Figure 3: Homepage of NPDC.....	5
Figure 4: Sign-in page.....	5
Figure 5: User’s Registration Form	6
Figure 6: Free Text Search.....	7
Figure 7: Browse By Scientific Keywords	7
Figure 8: Browse By Location.....	8
Figure 9: Dataset’s search	9
Figure 10: Scientific Voyage Details.....	9
Figure 11: Sagar Kanya Cruise Report.....	10
Figure 12: Sample Metadata	10
Figure 13: Sample Metadata Form	11
Figure 14: Upload Actual/Processed Data.....	11
Figure 15: Metadata Save Information	12
Figure 16: Metadata Dashboard.....	12

1. Introduction

The NPDC <https://npdc.npor.res.in/npdc/homepage.action>, established in 2014, plays a crucial role in the management and collaborative dissemination of data generated through India's Polar Program. The scientific dataset and information represent important resources of non-replaceable nature in the field of scientific research. Effective data management is not a peripheral activity, but a fundamental element of contemporary scientific practice, integral to the validity and reproducibility of research findings. The expeditions generated vast amounts of data essential to solving complex scientific issues and advancing knowledge of polar and ocean science in the context of the NCPOR. These data cover a wide range of fields, including glacier, meteorology, oceanography and atmospheric science. We collaborate with national and international institutions, networks, and scientists to provide data management and analysis services, as well as actively participate in scientific research.

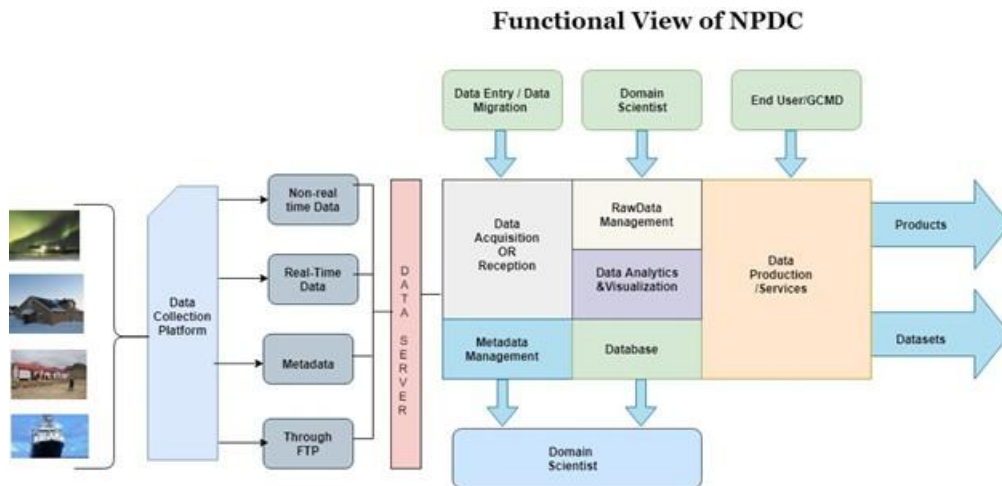


Figure 1: Overall functionality of NPDC

Flow diagram for metadata submission at NPDC

https://npdc.npor.res.in/npdc/submit_new_dataset.action

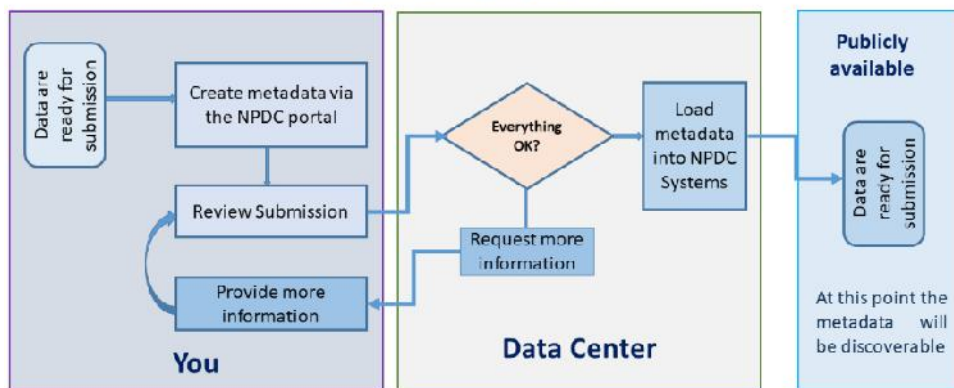


Figure 2: Flow of metadata submission by user at NPDC Portal

1.1 Home Page of the NPDC portal

<https://npdc.ncpor.res.in/npdc/homepage.action>

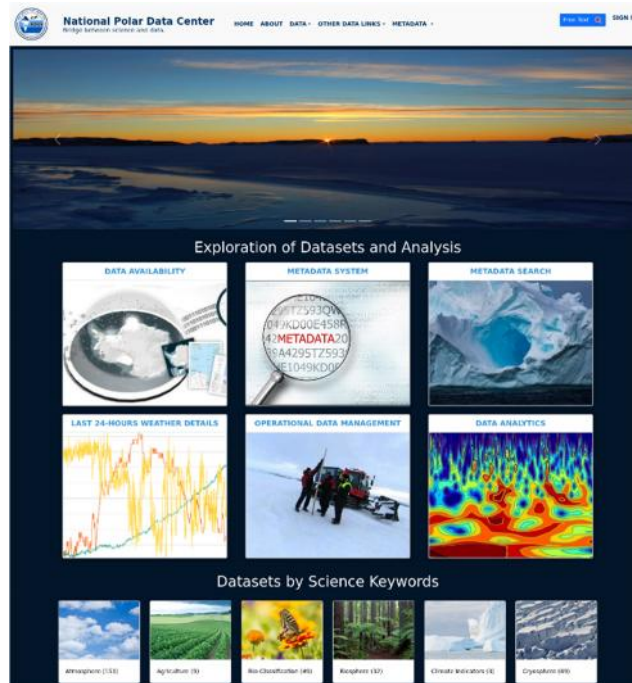


Figure 3: Homepage of NPDC

1.2 How to Sign-In for a new user

Click on Sign-In on the top right corner of the homepage.

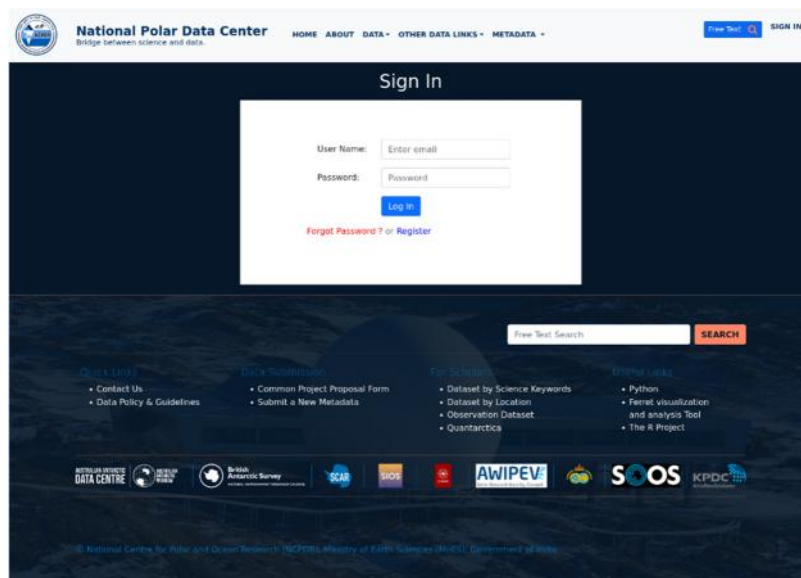


Figure 4: Sign-in page

2. Search/Browse metadata.

2.1 Free Text Search

Any user may do free text search / browse metadata by clicking on the “FREE TEXT” (top right corner) search.

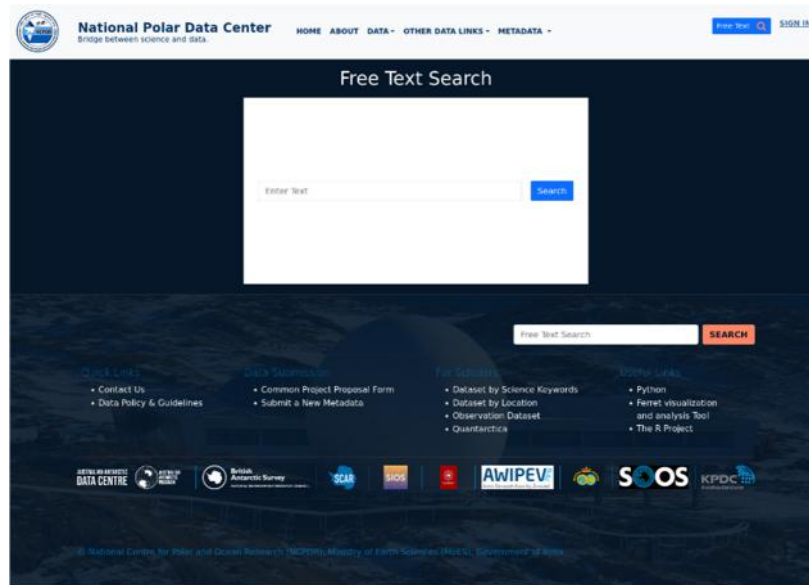


Figure 6: Free Text Search

2.2 Browse by Scientific Keywords

By clicking on the Data (Top Menu) Search For Datasets Browse By Keyword

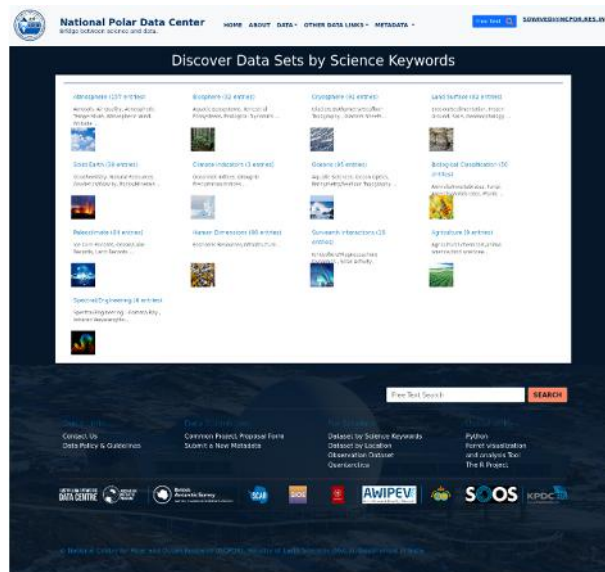


Figure 7: Browse By Scientific Keywords

2.3 Browse by Location

By clicking on the Data (Top Menu) Search For Datasets Browse By Location

National Polar Data Center
Bridge between science and data.

HOME ABOUT DATA OTHER DATA LINKS METADATA

Free Text SIGN IN

Browse by Location

ANTARCTIC ARCTIC SOUTHERN OCEAN HIMALAYA

Sl.No	Location	# Datasets	View Details
1	Bharati	61	click to view
2	Central Dronning Maud Land	1	click to view
3	Dakshin Gangotri	60	click to view
4	India Bay - Prydz bay	1	click to view
5	Indian Ocean	2	click to view
6	Larsemann Hill	29	click to view
7	Maitri	308	click to view
8	Maitri and Bharati	48	click to view
9	Part of cDML	3	click to view
10	Princess Astrid Coast	2	click to view
11	Queen Maud Land	24	click to view
12	Schirmacher and Larsemann Hills	2	click to view
13	Schirmacher Oasis	78	click to view
14	Southern Ocean	19	click to view
15	Voyage and Maitri	7	click to view

Free Text Search **SEARCH**

Quick Links

- Contact Us
- Data Policy & Guidelines

Data Submission

- Common Project Proposal Form
- Submit a New Metadata

For Scholars

- Dataset by Science Keywords
- Dataset by Location
- Observation Dataset
- Quantarctica

Useful Links

- Python
- Ferret visualization and analysis Tool
- The R Project

AUSTRALIAN ANTARCTIC DATA CENTRE AUSTRALIAN ANTARCTIC PROGRAM BRITISH ANTARCTIC SURVEY NATURAL ENVIRONMENT RESEARCH COUNCIL SCAR SIOS AWIPEV SPOOS KPDC

© National Centre for Polar and Ocean Research (NCPOR), Ministry of Earth Sciences (MoES), Government of India

Figure 8: Browse By Location

2.4 Observation Datasets Search

By clicking on the Data (Top Menu) Search For Datasets Data Availability

Figure 9: Dataset’s search

2.5 Scientific Voyage Details

By clicking on the Data (Top Menu) Search For Datasets Scientific Voyage Details

Voyage Name	Cruise Name	Ship Name
ISOE-9	Indian Southern Ocean Expedition (ISOE)	MV SA-Agulhas
ISOE-8	Indian Southern Ocean Expedition (ISOE)	ORV-Sagar Nidhi
ISOE-7	Southern Ocean Expedition 2013	ORV Sagar Nidhi
ISOE-6	06th National Expedition to Southern Ocean	ORV Sagar Nidhi
ISOE-5	Southern Ocean Expedition 2011	ORV Sagar Nidhi
ISOE-4	Southern Ocean Expedition 2010	ORV Sagar Nidhi
ISOE-3	Southern Ocean Expedition-2009	R.V Akademik Boris Petrov
ISOE-2	Special Expedition to Larsemann Hills, Antarctica & Southern Ocean	R.V Akademik Boris Petrov
ISOE-10	10th Indian Sector of Southern Ocean Expedition	S. A. AGULHAS
ISOE-1	Pilot Expedition to Southern Ocean	ORV Sagar Kanya

Figure 10: Scientific Voyage Details

2.6 Sagar Kanya Cruise Report

By clicking on the Data (Top Menu) Other Datasets Sagar Kanya Cruise Report

Ship Name	Cruise No.	Period From	Period To	Chief Scientist	Cruise Area	Objective	Cruise Report
Sagar Kanya	SK367	2020-04-25	2020-05-25	Mr. Mohammed Shafiq B	Arabian Sea	1. Deep water multibeam survey in Arabian Sea, 2. Acquire MBES data in raw format (.raw format), 3. Process the MBES data using CARIS HPS and SIPS software and render data in ASCIIXYZ, 4. Prepare a Report of Survey	SK367.pdf
Sagar Kanya	SK366	2020-04-01	2020-04-21	Mr. Bala Laxman Mhadgut	Arabian Sea	The primary objective of the SK-366/366 cruise was to undertake multibeam bathymetry in Arabian Sea in within the EEZ of India and to conduct CTD/SVP cast at different locations within survey area. Bathymetry survey of the track line of total length 2315km, covering total area of approx. 15,585 sq. km, was completed during the current cruise.	SK366.pdf
Sagar Kanya	SK365	2020-01-15	2020-02-01	Dr. Twinkle Darnodharan	Arabian Sea	The primary objective of the SK-365 cruise was to undertake multibeam bathymetry and Magnetometer survey in in Arabian sea, west coast of India, within the EEZ of India and to conduct CTD/SVP cast at different locations within survey area. Total area covered 8631 km ² and with track line length of 2634 km during SK-365. Along with multibeam data we acquired 1592 km magnetometer data.	SK365.pdf

Figure 11: Sagar Kanya Cruise Report

3. Metadata Details

Registered users are authorized to submit metadata forms online and retain the capability to edit and update their submissions as necessary. They can view their submitted metadata, download it as a PDF / XML formats and make required amendments. Additionally, the system accommodates the submission of processed data. Users can initiate this by selecting the 'submission of processed data' option and linking it to the appropriate metadata values, subject categories, and data classifications. For submitting online metadata, the link is https://npdc.ncpor.res.in/npdc/submit_new_dataset.action

National Polar Data Center
HOME ABOUT DATA OTHER DATA LINKS METADATA

Search

Full Record **View PDF** **Export PDF**

Title:
Studies on the Increase in Salinity in the Arabian Sea: Observations from the Submersible Observing System (SOOS) at ASUT, Andhra Coast DIO MC.

Abstract:
The primary objective of the SOOS cruise was to undertake multibeam bathymetry and Magnetometer survey in in Arabian sea, west coast of India, within the EEZ of India and to conduct CTD/SVP cast at different locations within survey area. Total area covered 8631 km² and with track line length of 2634 km during SK-365. Along with multibeam data we acquired 1592 km magnetometer data.

Keywords:
Arabian Sea, Salinity, SOOS, Andhra Coast, DIO MC.

Metadata:
 Institution: IIT Madras
 Department: IIT Madras
 Name of Center: IIT Madras
 Name of Laboratory: IIT Madras
 Country: India
 State: Andhra Pradesh
 City: Visakhapatnam
 Pin: 531007
 Name: IIT Madras
 URL: <http://www.iitmadras.ac.in>
 PURL: https://npdc.ncpor.res.in/npdc/submit_new_dataset.action
 Description: Studies on the Increase in Salinity in the Arabian Sea: Observations from the Submersible Observing System (SOOS) at ASUT, Andhra Coast DIO MC.

Submit

Figure 12: Sample Metadata

4. How to submit metadata

Click on Metadata(top menu) Submit Metadata New Metadata, a new metadata form will be opened to fill necessary information.

The screenshot shows the 'ONLINE METADATA FORM' on the National Polar Data Center website. The form is organized into several sections: Expedition Type (with radio buttons for Antarctic, Arctic, Southern Ocean, and Himalaya), Metadata Title, Science Keywords (with dropdowns for Category and Topic), ISO Topic, Expedition Year, Expedition No., Project Details (Project, Name, Project Name), Summary (Abstract, Purpose), Dataset Citation (Citation, Date, File, Series Name), Release Date, Release Place, and Version.

Figure 13: Sample Metadata Form

4.1 Upload Dataset for the corresponding submitted metadata

-) After Saving the metadata, you can upload actual/processed datasets
-) The actual data may be uploaded using the dashboard while it is not ready to upload

The screenshot shows the 'Dataset Upload' page on the National Polar Data Center website. The form includes fields for Metadata Title (with a description: 'Meta-data Title The title of the data set described by the metadata e.g. "Hourly Tidal Observations from the Coast of India - 1942-1996.'), Expedition (Antarctic), and Add Actual/Processed Dataset (with a 'Browse...' button and 'No file selected' text). Below the form, there are instructions: 'File extension should be .xls, .xlsx, .doc, .docx, .zip, .csv, .pdf, .nc', 'File size should be less than 2 GB', and 'If you have multiple files, zip it and upload the zip file'. There is an 'Upload' button. The page also features a search bar and a footer with navigation links and logos for various organizations like AWIPEV, SIOS, and KPDC.

Figure 14: Upload Actual/Processed Data

4.2 Metadata saved Successfully

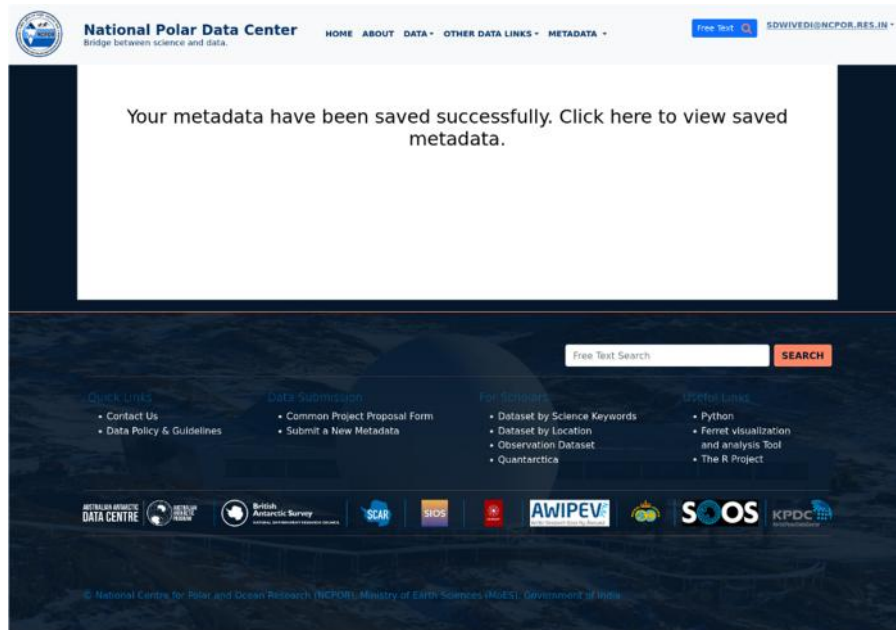


Figure 15: Metadata Save Information

4.3 Metadata Dashboard

User has the privileges in the metadata dashboard with following options

-) Update / modify and link with actual datasets
-) Edit the metadata

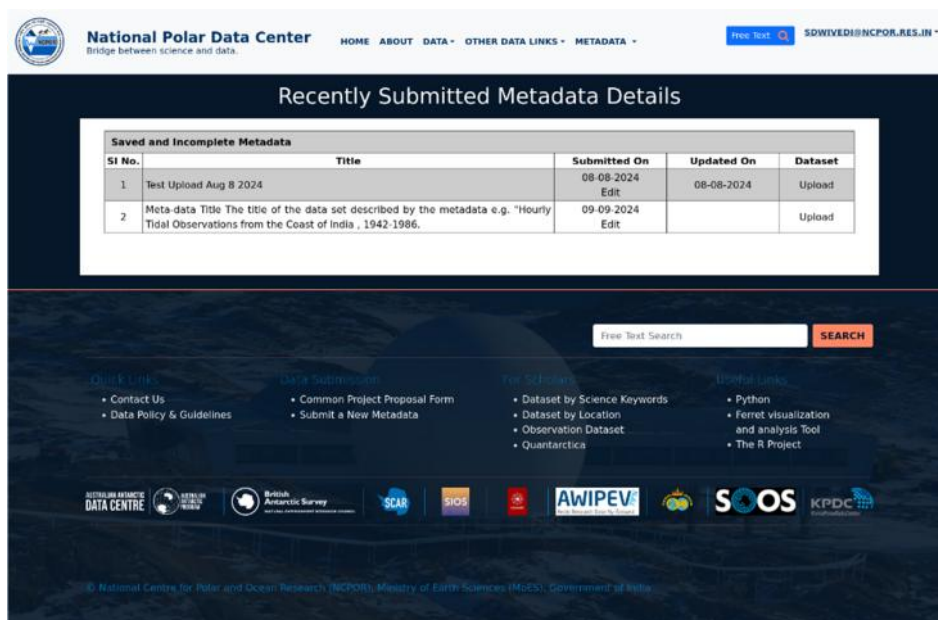


Figure 16: Metadata Dashboard

Document Revision History

Version	Date	Description of Changes	Prepared by
1.0	9 th Sept 2024	Initial Release / Draft	Shubham Dwivedi
1.1	25 th Sept 2024	Reviewed initial release	V S Samy